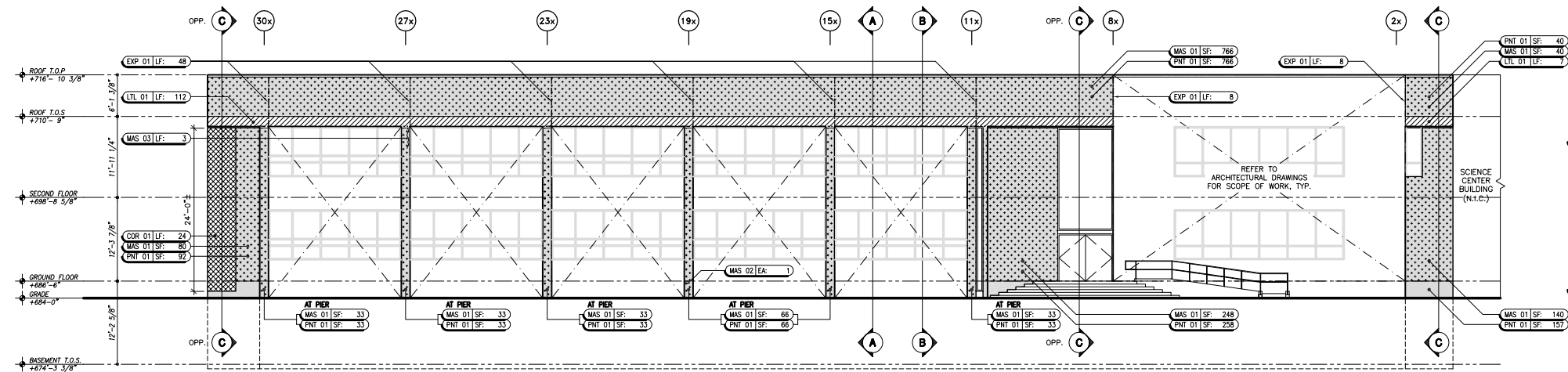
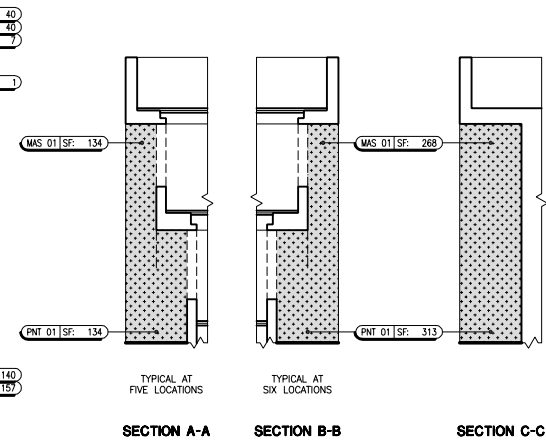
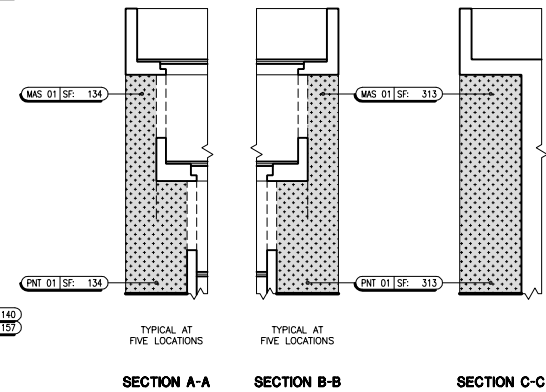


01 EAST ELEVATION
SCALE: 1/8" = 1'-0"

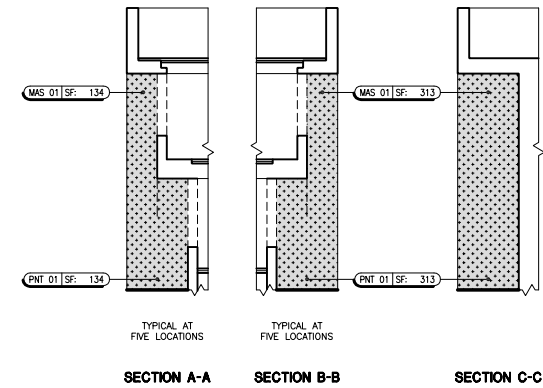
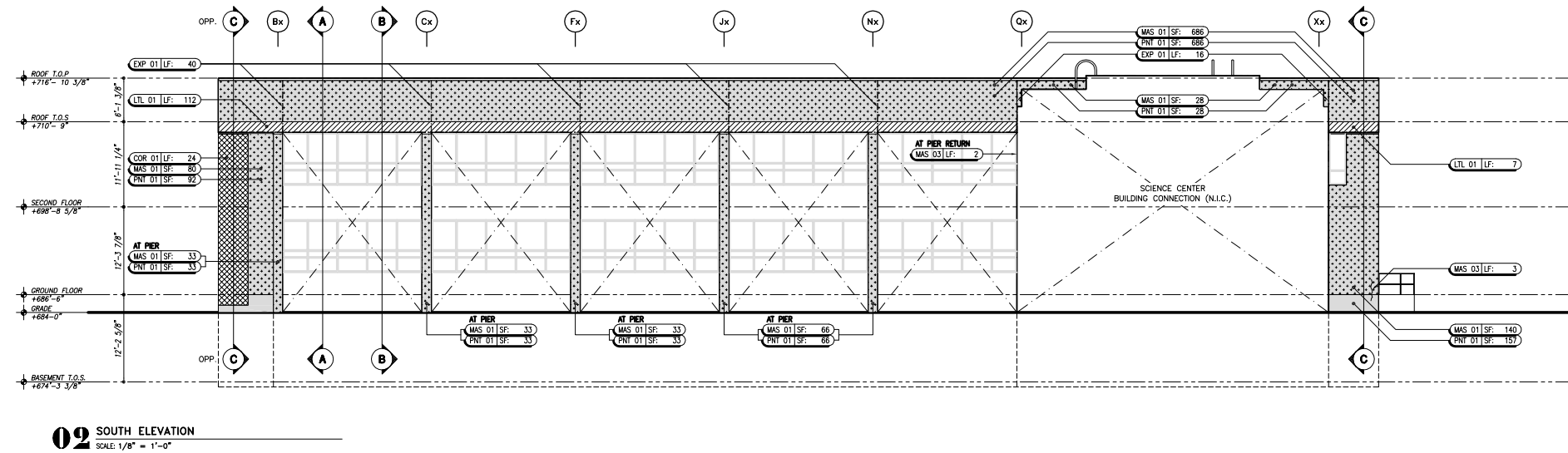
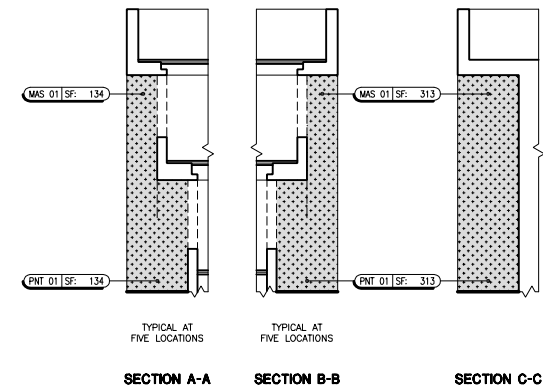
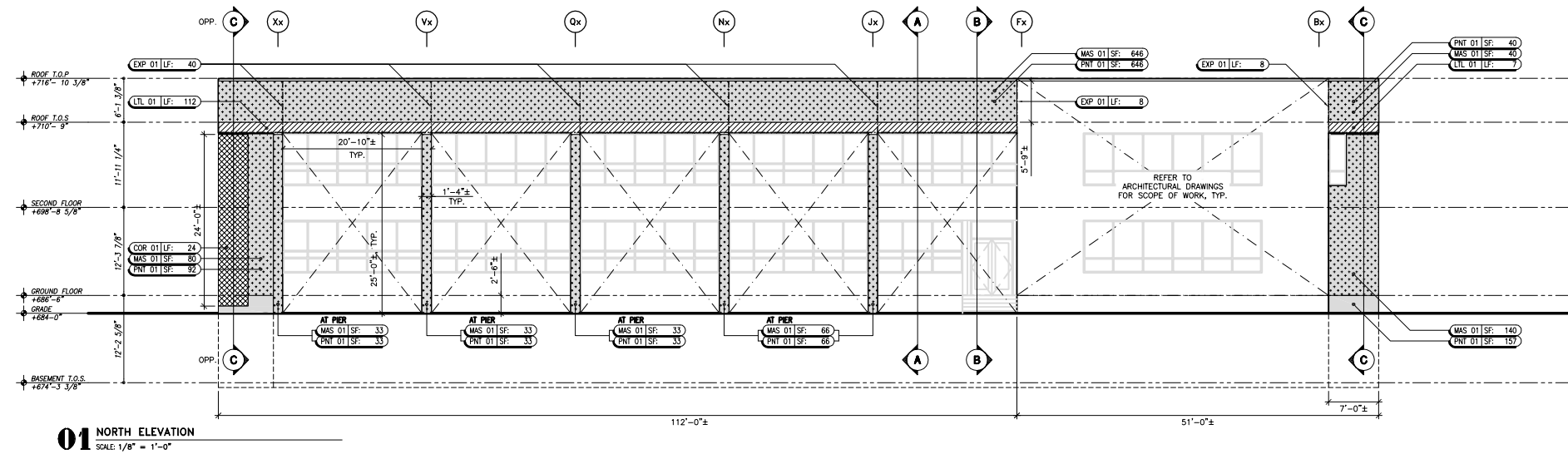


02 WEST ELEVATION
SCALE: 1/8" = 1'-0"



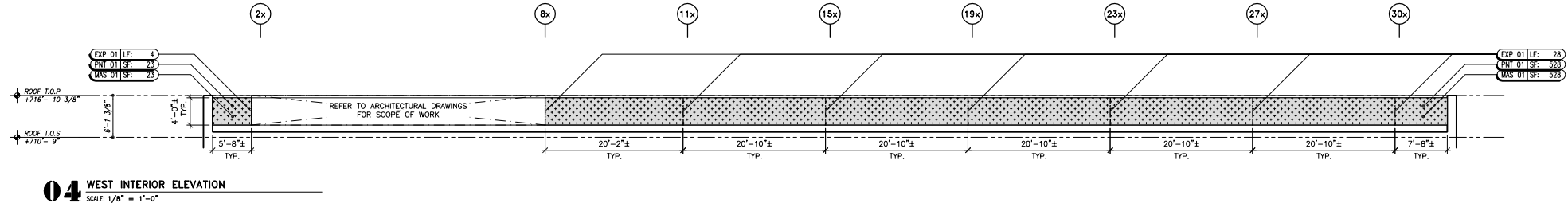
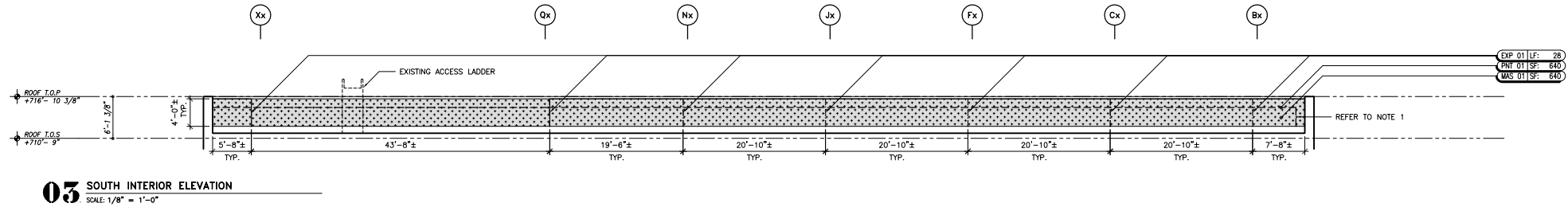
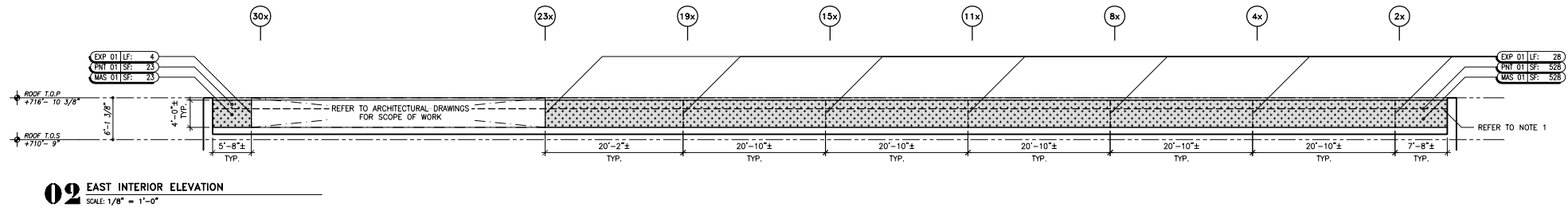
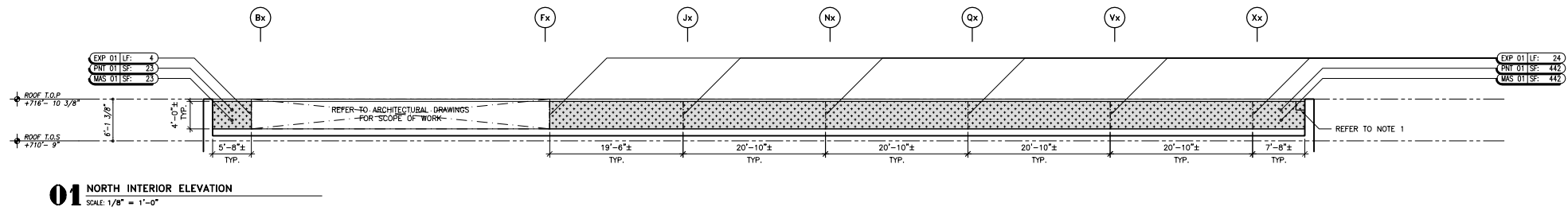
RESTORATION SCHEDULE			
CODE	DESCRIPTION	UNIT	KEY
COR 01	BRICK CORNER RECONSTRUCTION: CAVITY WALL	LF	
EXP 01	EXPANSION JOINT INSTALLATION	LF	
LTL 01	LINTEL RESTORATION	LF	
MAS 01	BRICK FACADE PINNING	SF	
MAS 02	INDIVIDUAL BRICK REPLACEMENT	EA	
MAS 03	BRICK CRACK REPAIR	LF	
PNT 01	BRICK POINTING	SF	

NOTES
1. REFER TO SECTIONS A-A, B-B AND C-C FOR SCOPE OF WORK AT BRICK PIERS (TYP.) AT ALL ELEVATIONS.



RESTORATION SCHEDULE			
CODE	DESCRIPTION	UNIT	KEY
COR 01	BRICK CORNER RECONSTRUCTION: CAVITY WALL	LF	
EXP 01	EXPANSION JOINT INSTALLATION	LF	
LTL 01	LINTEL RESTORATION	LF	
MAS 01	BRICK FACADE PINNING	SF	
MAS 02	INDIVIDUAL BRICK REPLACEMENT	EA	
MAS 03	BRICK CRACK REPAIR	LF	
PNT 01	BRICK POINTING	SF	

NOTES
 1. REFER TO SECTIONS A-A, B-B AND C-C FOR SCOPE OF WORK AT BRICK PIERS (TYP.) AT ALL ELEVATIONS.

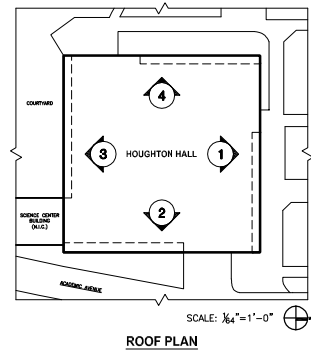


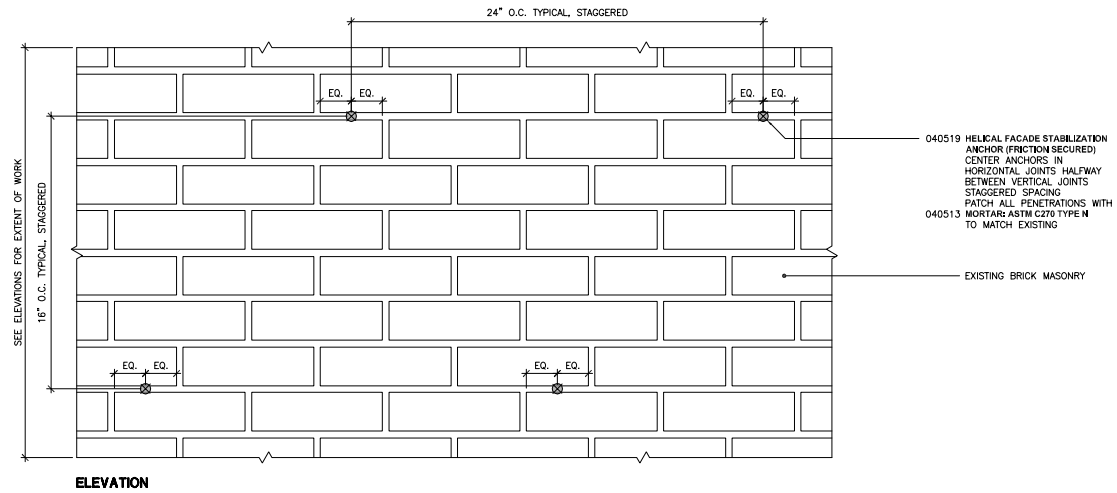
RESTORATION SCHEDULE			
CODE	DESCRIPTION	UNIT	KEY
EXP 01	EXPANSION JOINT INSTALLATION	LF	---
MAS 01	BRICK FACADE PINNING	SF	-----
PNT 01	BRICK POINTING	SF	-----

LEGEND	
DESCRIPTION	KEY
EXISTING CONDUIT	-----

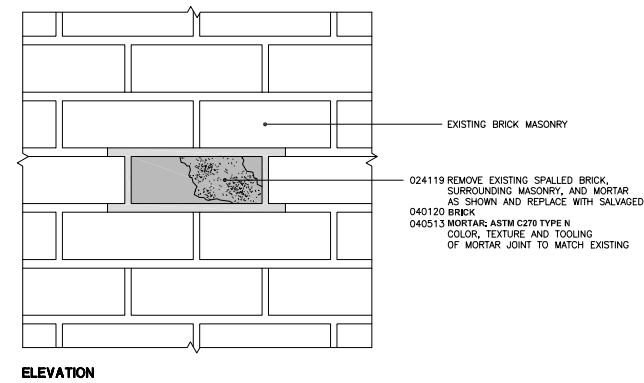
NOTES

1. TEMPORARILY REMOVE EXISTING CONDUIT AND JUNCTION BOX BOX AT INTERIOR FACE OF PARAPET AND RELOCATE OUT OF AREA OF CONSTRUCTION. ONCE MASONRY WORK IS COMPLETE, REATTACH CONDUIT AND JUNCTION BOXES IN SAME LOCATIONS WITH NEW STRAPS AND ANCHORS. ALL WORK TO BE PERFORMED BY LICENSED ELECTRICIAN.

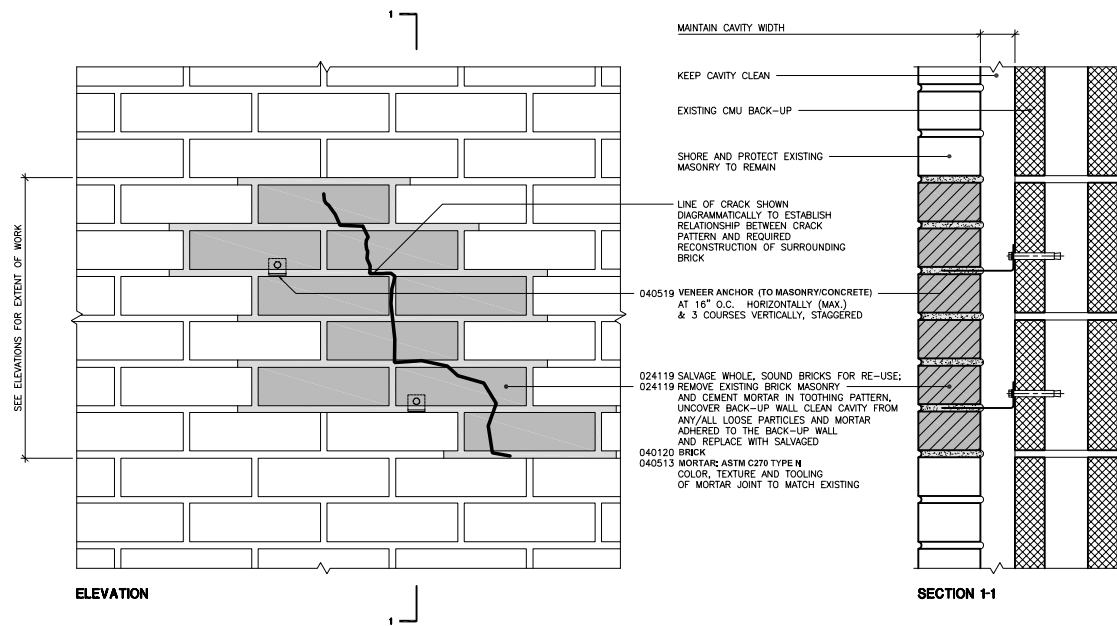




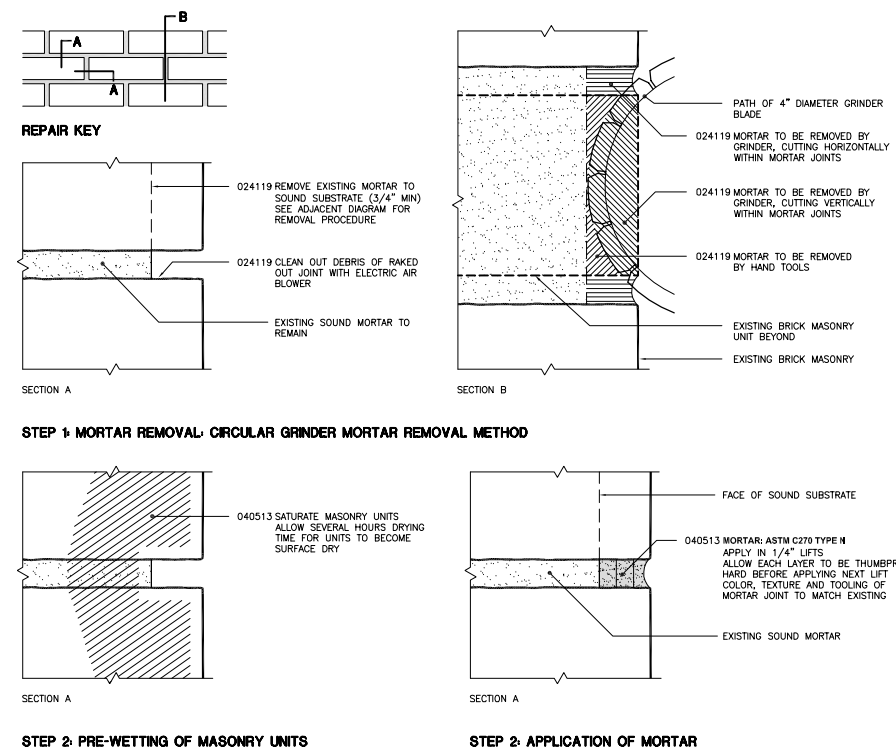
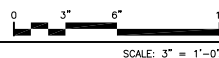
MAS 01
BRICK FACADE PINNING



MAS 02
INDIVIDUAL BRICK REPLACEMENT

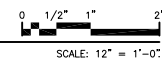


MAS 03
BRICK CRACK REPAIR

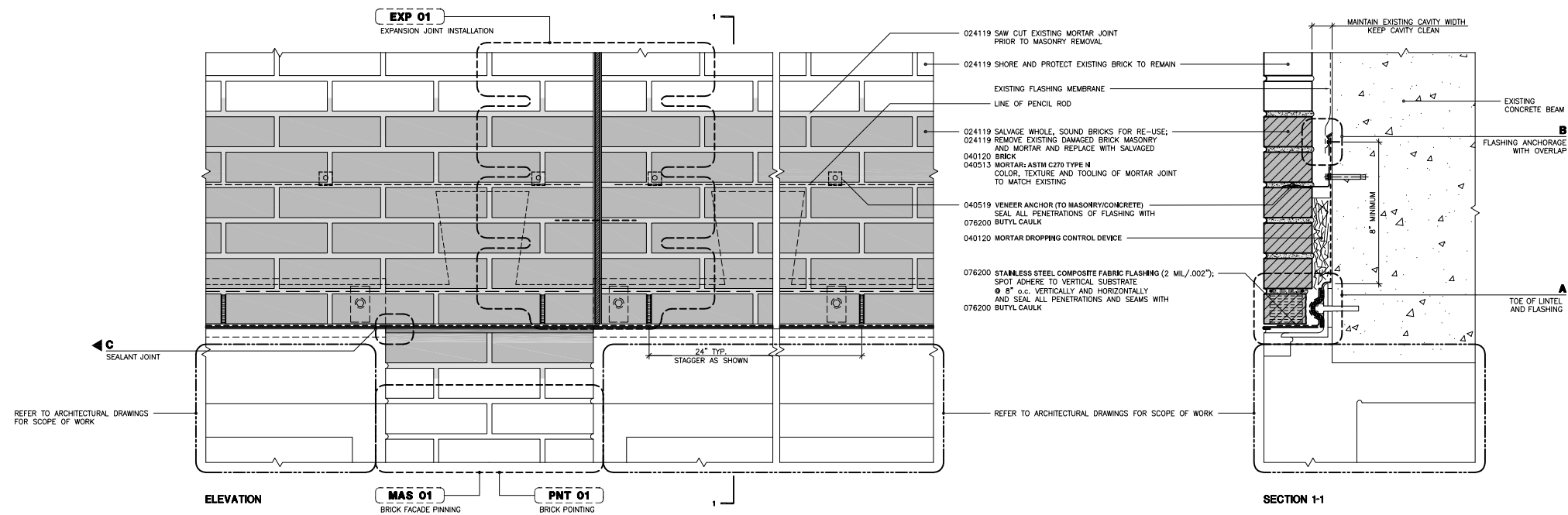


STEP 2: PRE-WETTING OF MASONRY UNITS

STEP 2: APPLICATION OF MORTAR

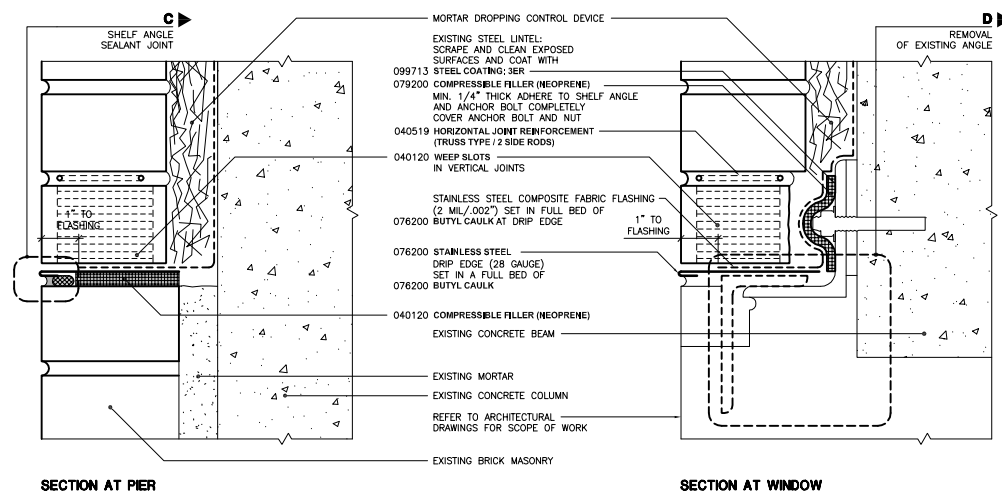
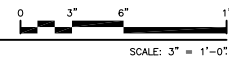


PNT 01
BRICK POINTING

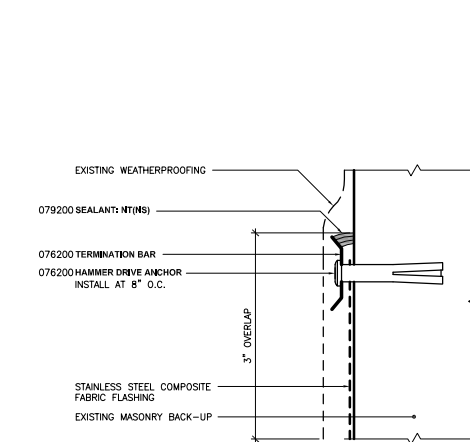


LTL 01

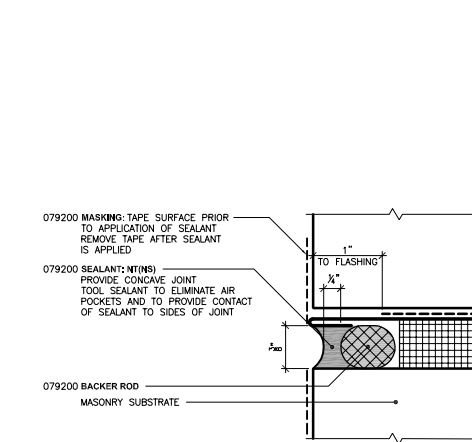
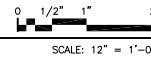
LINTEL RESTORATION



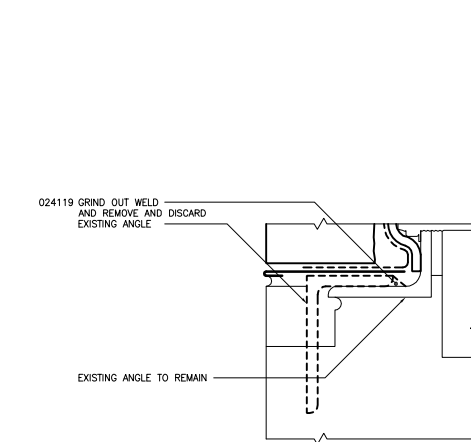
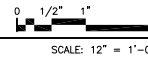
A LTL 01
TOE OF LINTEL AND FLASHING



B LTL 01
FLASHING ANCHORAGE WITH OVERLAP



C LTL 01 & COR 01
SEALANT JOINT



D LTL 01
REMOVAL OF EXISTING ANGLE

